

# KeJie Weight Soft User Manual

FuZhou Kejie Weight Equipment System Co.LTD

(Be Applicable to KJS-06 v1.4 and before)

## Table of Contents

<b>Chapter 1 Introduction</b> .....	<b>3</b>
<b>Chapter 2 System Install</b> .....	<b>4</b>
2.1 System Requirements	
2.2 Install Step	
2.3 Connection Manner	
2.4 System Start-up	
<b>Chapter 3 Operate And Maintenance</b> .....	<b>5</b>
3.1 Weight Operate	
3.2 User Management	
3.3 Data Maintenance	
3.4 Record Query	
3.5 Database Address	
3.6 Data Backup	
3.7 Data Clean up and Export	
<b>Chapter 4 System Setting</b> .....	<b>12</b>
4.1 Option	
4.2 Meter Setting	
<b>Chapter 5 Print Setting</b> .....	<b>13</b>
5.1 Print Ticket	
5.2 Print Static.	
5.3 Modify Ticket	
<b>Chapter 6 Additional Tools</b> .....	<b>16</b>
6.1 Change Skin	
6.2 Change Password	
6.3 Change User	
6.4 Simulate	

## Chapter 1 Company Introduction

Fuzhou Kejie Electron Weighing CO., Ltd is a Sino-Japan joint venture, which is located in Mawei Science and Technology Zone and occupies an area of 15,000 square meters. We are developing and producing various electronic weighing products and weighing system project through introducing foreign advanced technology and scientific management experience.

批注: We are developing and producing

Our products, distributed over many industries, are highly approved and relied by numerous customers. The output of automobile weighing scales exceeds one thousand sets every year, which ranks first in Fujian Province and top in China.

We have great faith that competitions among enterprises not only exist in product but also in service. Therefore, we believe that quality is the life of an enterprise and service is the soul. What we offer to you are not only products but also service. We make full use of regional advantages, firmly set up the idea of customer first and offer services for sold out products. Since the first time we contact, you have become our loyal clients. All of us will do our utmost to provide you a series of high quality services including product selection and installation, pre-selling technology consultation and three post-selling guarantees etc.

It is the common desire and main purpose of Kejie staff to regard

“advanced technology, high level and high quality” as our core value and provide customers with best services and first-rate technology.

Kejie weighing scales, your desirable choice!

### Important Announcement

1.Thank you very much for using the weight software produced by our company , please read this user manual before using the software,so that you can understand the superiority and function; when you use the software , we think that you have read this user manual.

2.It is Possible that there are some differences between the software and the user manual,if happened, forgive it.

## Chapter 2 System Installation

### 1.System Requirement

#### 1.1 System Configure

##### a. A computer

commended configure CPU : Celeron 4 1.7G      memory: 256 MB  
disk: 40G      display: 17' inch  
CD-ROM: 52X

##### b. Equipment interface

there must be a RS-232 COM, if you want a software which can connect more than one scale, you must get some superfluity equipments.

##### c. special equipment

if you need a video system,you must get a video gather card.

#### 1.2 .System Environment

the software can be running at MS Windows 9X/2000/XP/2003 etc. there may be some words can not display normally at some other OS.。 We commend that you use the Win2000 SP4,so that you can run the software normally.

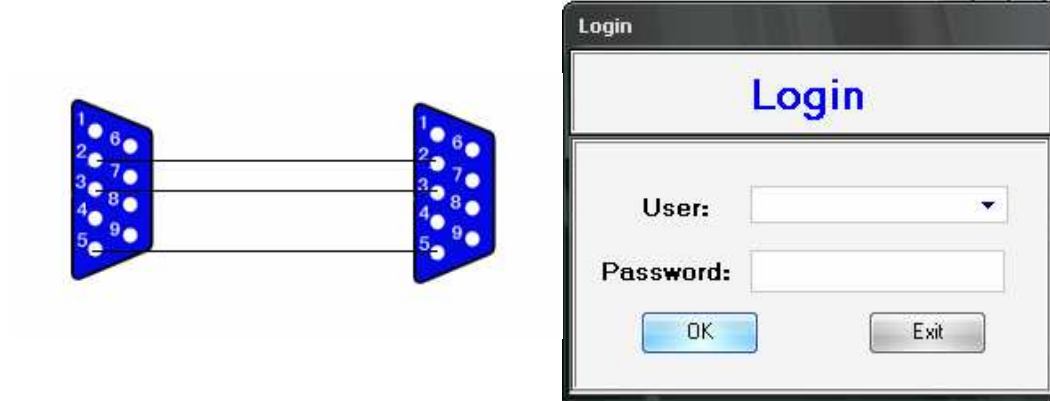
### 2.Install step

2.1. Read the Meter User Manual,check the baut-rate ,and you must set the sending manner to the continues sending.(we have set the manner before it leave our factory)

2.2 use the connection line we provide to connect the meter and computer.

2.3 Open the computer,login,install the software in the CD,just step by step.

### 3.Connection between Meter and Computer



Pic 1

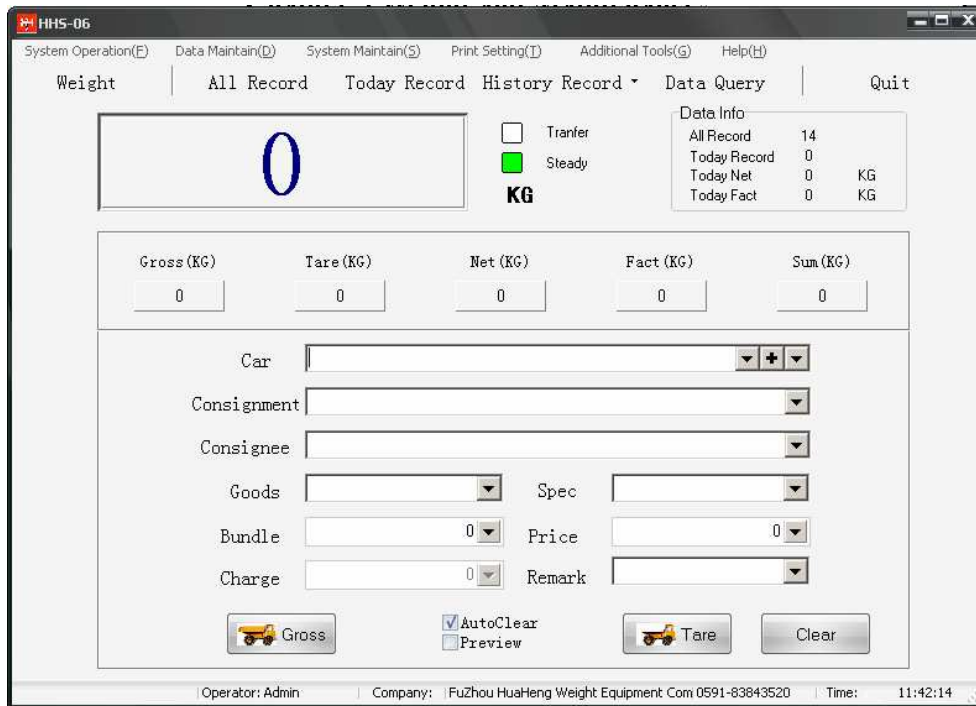
### 4. Some other explanation

- 4.1. After installation,there will be a short –cut in the desktop,db-click it.
- 4.2. if you have not inserted the watch-dog ,there will be a warning before you login the software, we match one watch-dog one software, if you don't have the watch, you will find that you can't save the record.
- 4.3 when you enter into the Login Form, there is a default user:Admin,and the password is "123",please change the password after you login,but the user can not be deleted.

## Chapter 3 Weight and Maintenance

### 1. Weight

Choose the Menu "System Operation->weight" or click the "weight" in the toolbar.



Pic2

After the setting of the meter , there is a num in the main panel , including the transferring signal and steady signal



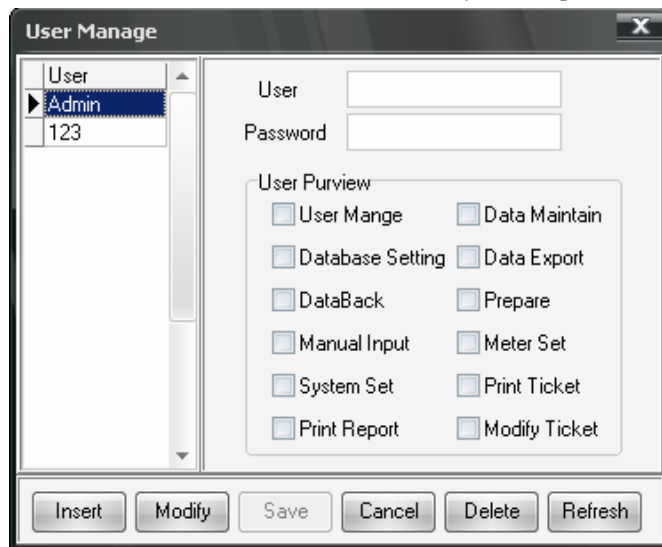
Pic3

the transferring signal shows the that whether there is something from the COM; the steady signal shows the steady of the data.

1. Weight, after the steady of the data, fill the car number and other data;  
If you gross , click the “gross” button, then click the “save”, that you have save a gross record; else if you tare ,click the “tare” button, then click the “save ”,that you have save a tare record;
2. if you weight the car the second time, the software will find the record with the same car number, if you gross the second time, the software will find the tare record and other information, then click the “save” button.. the same is the tare the second time;
3. when you input the car number ,you can find that there is a table which all the information is pre-maintain;
4. Bundle : Fact = net – bundle;
5. price: Fact \* price = total;
6. if you find the data you input something wrong , you can click the “clear” button.

## 2.User Management

Choose the menu “Data Maintain->User Maintain” , then you can open the dialog follow:



Pic 4

2. 1. The Grid Shows all the users in the database , you can change the user priority.
  - a. insert : click the “insert” button , input the user and password , and priority.
  - b. delete : click the user you want to delete , click the “delete” button.

- c. modify : click the “modify” button , check the priority in the checkbox , then click “save”;(notice: the admin user can not be deleted , and also the priority “user manage” is always with it, but you can change its name or password)

## 2.2 Common Priority

Everyone has the priority of Weight , DataQuery , backup the database in the default path, change their password. If you have some special request ,contact us.

## 3.Data Maintenance

Click the “All Record” button on the toolbar or “history” button , you can see the panel follow :

Data								
GlideNum	Car	Operator	Consignment	Consignee	Goods	Spec	Gross	Ta
000002	2563	Admin	HuaHeng	JiangShu	Crane		7505.8	5
000003	2563	Admin	HuaHeng	DongGuan	Crane		8233.5	
000004	2563	Admin	HH	GuangZhou	Scale		9758.9	6
000005	232	Admin	HH	FuZhou	Scale	eqr	6175.1	
000006	8521	Admin	HH	XiaMen	Scale		8922.7	2
000007	3521	Admin	HH	ZhangZhou	Scale		7221.8	3
000008	2563	Admin	HH	GuiZhou	Scale	100T	4617.1	2
000009	2563	Admin	HH	GuiYang	Computer		6677.7	5
000010	2563	Admin	HH	JinZhou	Meter	8142	3854	3
000011	B8521	Admin	HH	BeiJin	Meter	3198	9158.2	
000012	B8521	Admin	44	ShangHai	Car	2005D	9534.6	8
000013	B8521	Admin	44				8501.4	
000014	AT232	Admin	KJ	DongGuang	Scale	100T	12460	
000015	AT232	Admin	KJ	DongGuang	Scale	100T	12460	
Total:	14						115080.8	

DataQuery	Data Operate	DataSet	Data Export
<input type="button" value="First"/>	<input type="button" value="Edit"/>	<input type="button" value="Column Set"/>	<input type="button" value="Data Export"/>
<input type="button" value="Last"/>	<input type="button" value="Delete"/>	<input type="button" value="AutoFit"/>	<input type="button" value="Data Print"/>
	<input type="button" value="Insert"/>		
	<input type="button" value="Refresh"/>		
	<input type="button" value="Post"/>		
	<input type="button" value="Cancel"/>		

Pic5

### 3.1. Select the record

You can click the row you want to modify, the record you selected will show red.

### 3.2. Add Record

click the “insert” button , there will be a new line, then you can input any data.

### 3.3. Delete Record

you can not restore it after you delete it ,be cautious to it.

### 3.4. Refresh Record

when the database is used by one more people, please refresh the record before you modify.

### 3.5. Column Setting

you can show the columns you like, and hide the columns you don't like.

### 3.6. AutoFit

it can fit the width of every column automatically.

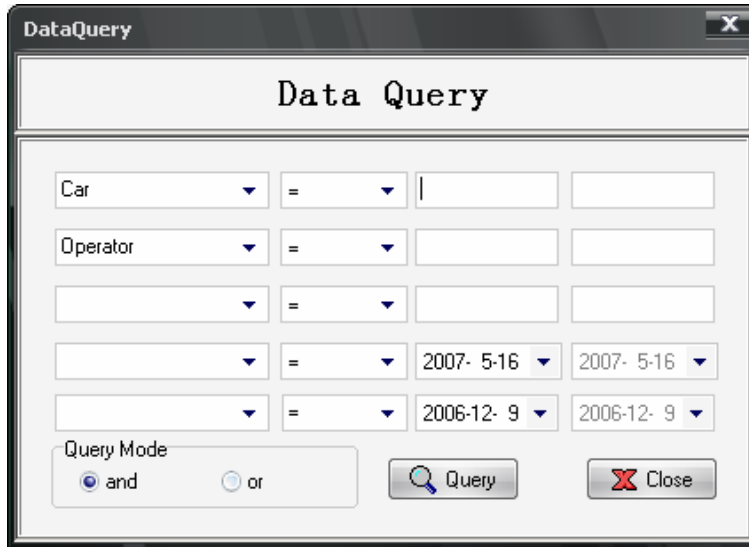
### 3.7. Data Export

Export the data as Excel file or txt file.

### 3.8. Data Print

## 4. Data Query

Click the “Data Query” button on the toolbar, you can input the condition in the dialog.



### 4.1. All Record

it can show all the records since you use the software , when there are too much records, it may take some time more, as a solution , you can delete some records you don't need any more , or compress the database.

### 4.2 Today Record

### 4.3 History Record

show the records have not complete , the loss of Gross Date or Tare Date.

### 4.4 Data Query

you can choose the condition you like , then choose the expression .

“=”, “<”, “>”, “>=”, “<=”, “Like”, “No Like”, “Between”

## 5. Database Address

Choose the menu “data maintain -> database setting”, you can see the dialog follow :



Pic7

## 1. Connect Database

### 1.1 Default Database

when you check the “default database”, the database address is assigned to the file in the folder “database” under the current path .

### 1.2 other database

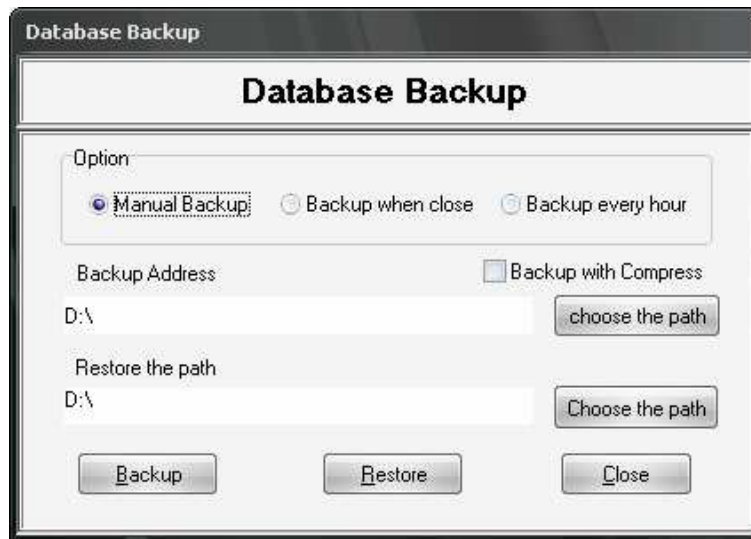
if you want to locate the database to other path , you must check out the “default database”, then choose then “choose” button , choose the database you like in the dialog pop up.

## 2. Compress database and repair database

As the using of the database , the more record ,the more time you want to get it , so you can attempt to compress the database , it can short the time you get the records ; if the database is destroyed by some reason , power cut for example, you can try using the “repair” function .

## 6. Data Backup

Choose the menu “Data Maintain -> Database Backup”, you can see the dialog follow :



Pic8

### 1. backup the database

#### 1.1 backup manual

click the “choose the path” button , select the path, then click the “Backup” button ,we will backup the database with the filename including date and time , you can also compress when you compress it.

#### 1.2 backup the database every time you close the software

check then radio button “ backup when close”, then every time you close the software , it will backup the database in the default path before the software close.

#### 1.3 backup the database every hour

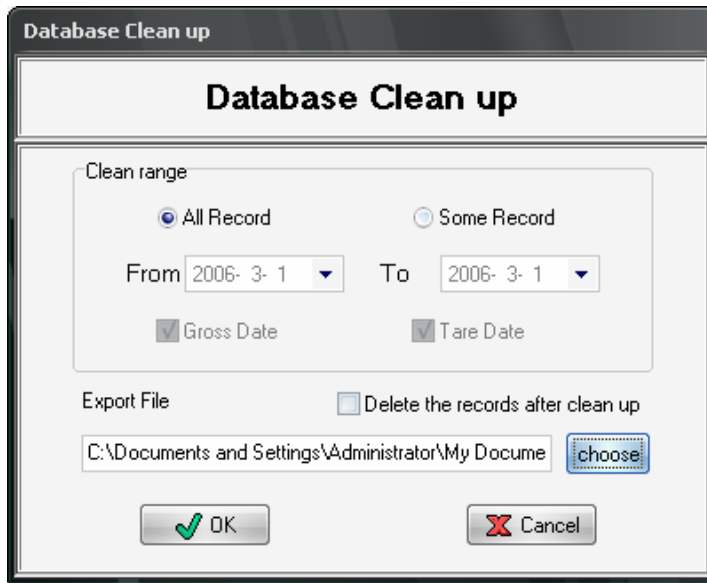
check the radio button “backup every hour”, then even if you don’t close the software , it will backup the database every hour automatically in the default path .

### 2. Restore the database

choose the file you want to restore the database from , the click the “Restore ” button .

## 7. Data Clean up and export

choose the menu “data maintain -> database clean up”, you will see the dialog follow :



Pic9

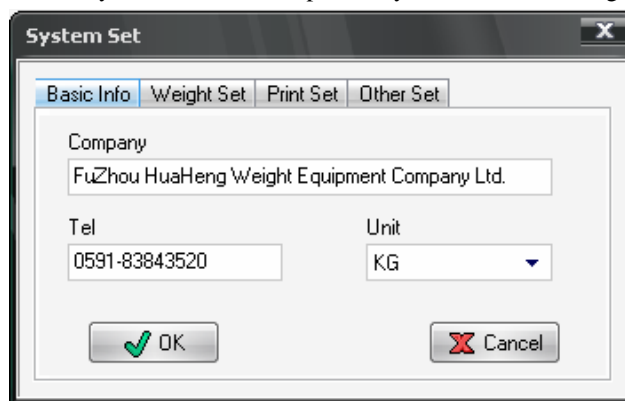
it can only export the database as the excel file

1. export all the records  
select the “All Record”, then choose the path , click “OK”;
2. export some records  
select the records according to your condition , click “OK”;
3. delete the records after you export the records  
if you choose the option , all the records you export will be deleted , commend: backup the database before you do it .

## Chapter 4 System Setting

### 1. Option

Choose the menu “System Maintain -> Option ”, you will see the dialog follows:

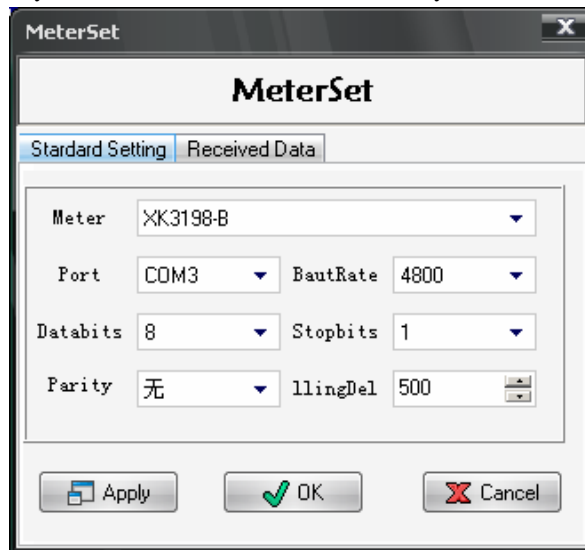


Pic 10

1. Basic Info  
Setting of Company, Telephone Number ;
2. Weight Set  
Setting of the Dropdown Count ,Auto Dropdown characteristic
3. Print Set  
Set the ticket you print .
4. Other Set  
Set the auto run of the software and auto close time .

## 2. Meter Connection

Choose the menu “System Maintain -> Meter Connection” , you will see the dialog follows:



Pic 11

Standard Setting :

Choose the Meter , Port , Baud Rate , Data bits , Stop bits , Parity , PollingDelay , then you can connect the Meter.

Received Data :

The memo will show the data get from meter

## Chapter 4 Print Report and Modify Ticket

### 1. Print Static.

Choose the menu “Print Setting -> Stat. Report ”, you will see the dialog follows:

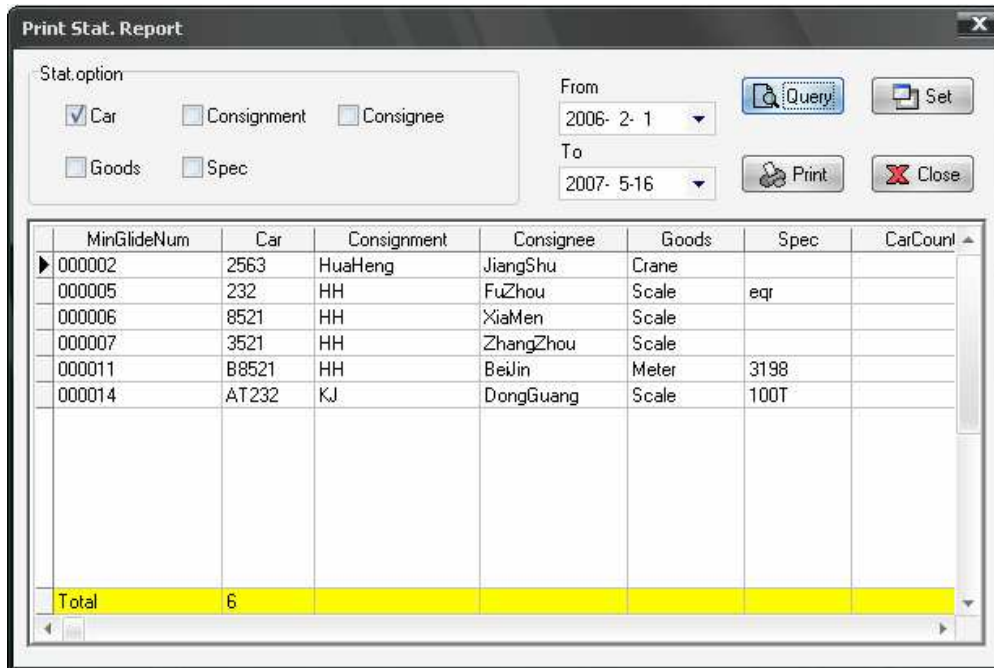
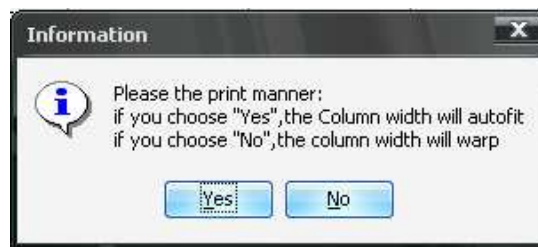


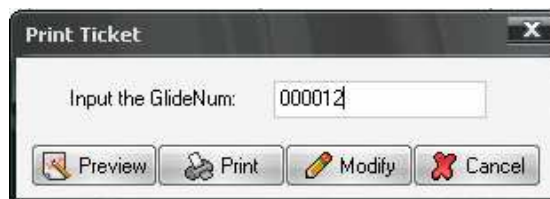
图 12



Choose the condition , then click the “Query” button

### 2. Print Ticket

Choose the menu “Print Setting -> Print Ticket ”, you will see the dialog follows :




Pic13

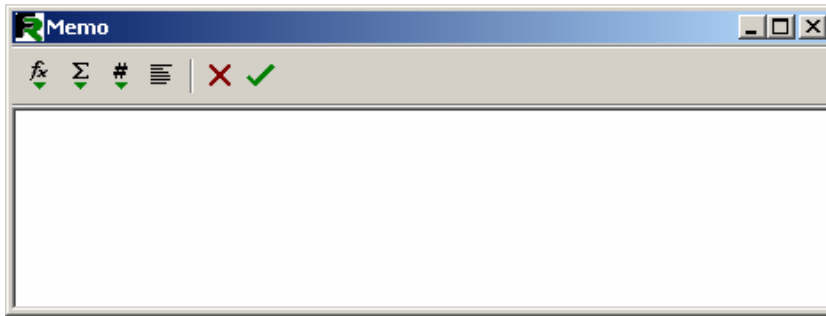
After input of the glidenum , you can preview or print the ticket .


### 3. Modify the Ticket Format

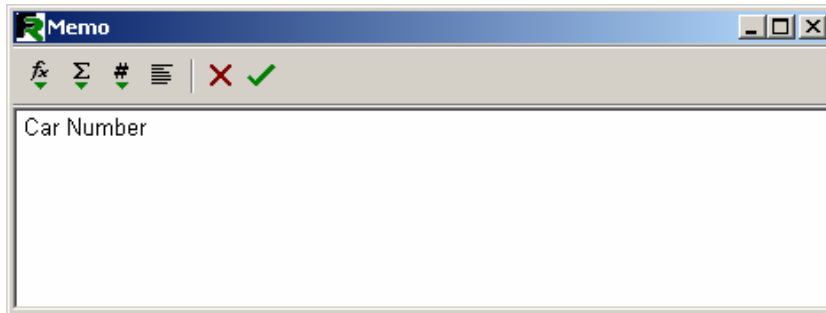
you can modify the ticket format in the menu “additional tools -> modify ticket” .

#### 1. Text Object

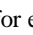

Find the picture  , click it , then put the mouse into the report , release the mouse , it will show a dialog follows :

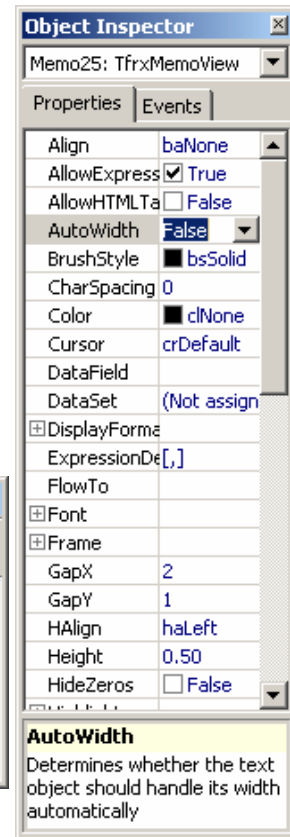


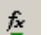
input the text , for example : Car Num , the click the picture  , finished .  
if you want to modify , db-click it , the same dialog you have seen before , just modify it.

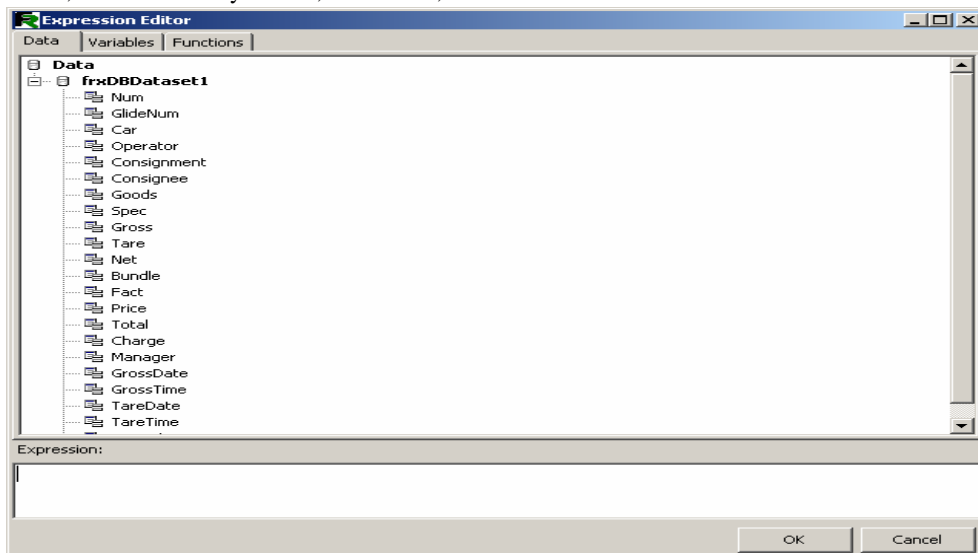


you can also change other attribute of the text , in the object inspector .

for example:  Font (TFont) 




2. if you want to insert a field that is variable , click the picture  , it will show a dialog follows , select the field you like , db-click it ,click the “OK” button .

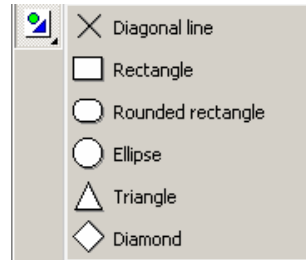


Or ,you can get help from the “object inspector” , set the attribute “Data Field” and “DataSet” :

DataField	Car
DataSet	frxDBDataset1

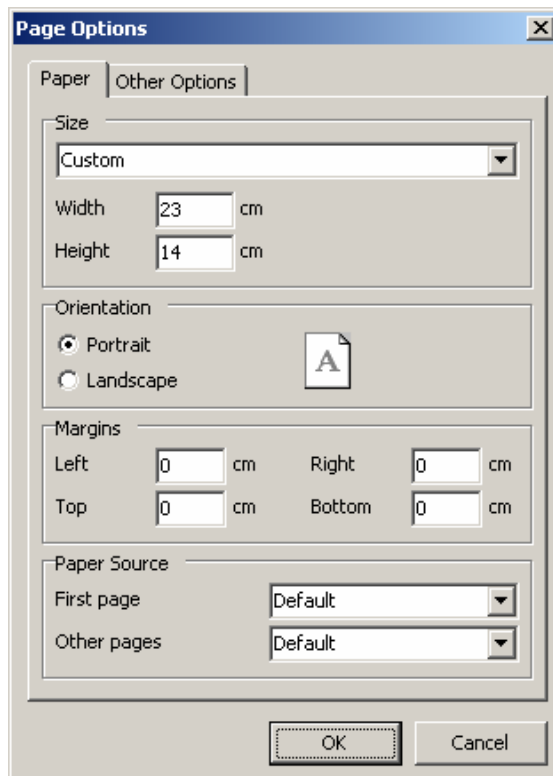
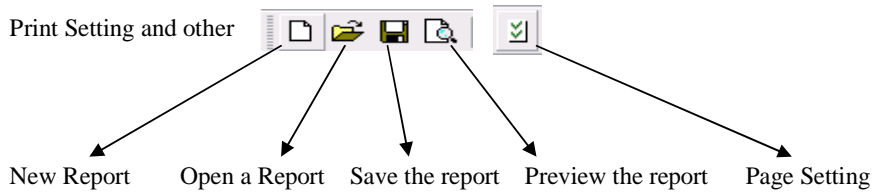
2. Draw the Table

Click the button  choose the shape you like ,  
Then put the mouse to the report , click anywhere,  
Release it ,you can see the shape follows:



You can also reshape it with the mouse

3. Print Setting and other



## Chapter 6 Additional tools

### 1. Skin Set

You can choose the “system maintain -> Skin setting”, choose Any skin file , you can get some new skin

### 2. Change password

You can not change other user’s priority , but you can change Your own password.

### 3. change user

choose the menu “system operation -> change user”, you can login as a new user ,difference user represent difference priority

### 4. Simulate

Only the admin can use the simulate.

